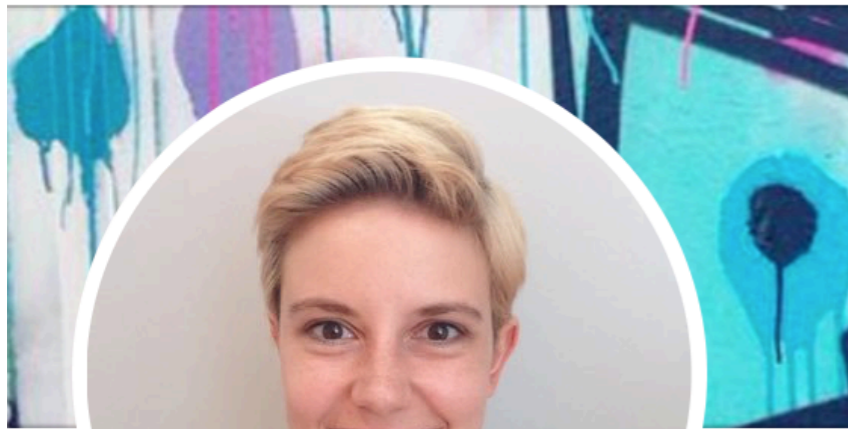


**open science  
for  
statistics support**



**Loughborough  
University**





**Theresa Elise Wege**

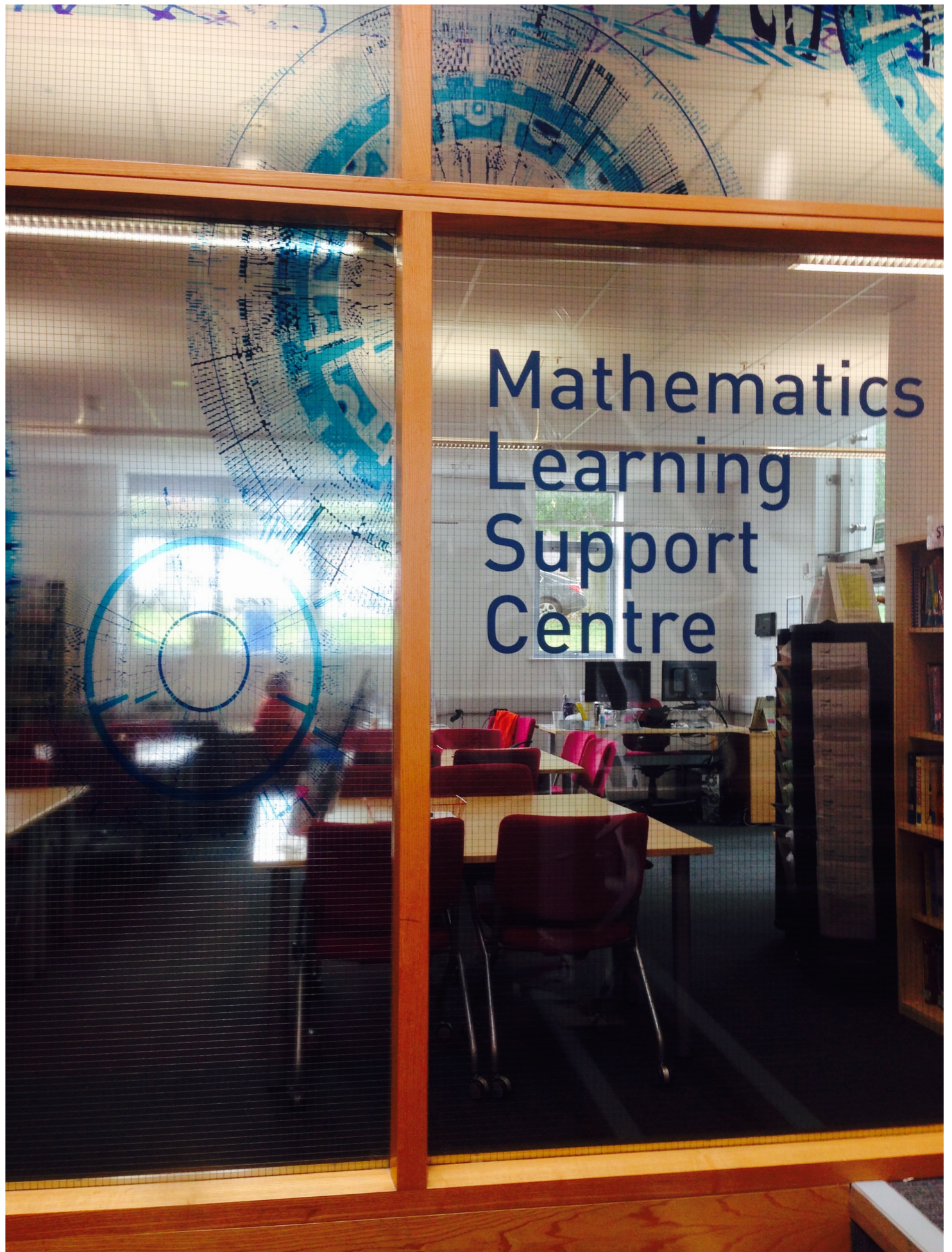
@TheresaWege

she/her

[t.e.wege@lboro.ac.uk](mailto:t.e.wege@lboro.ac.uk)



**Loughborough  
University**









# IS THERE A REPRODUCIBILITY CRISIS?



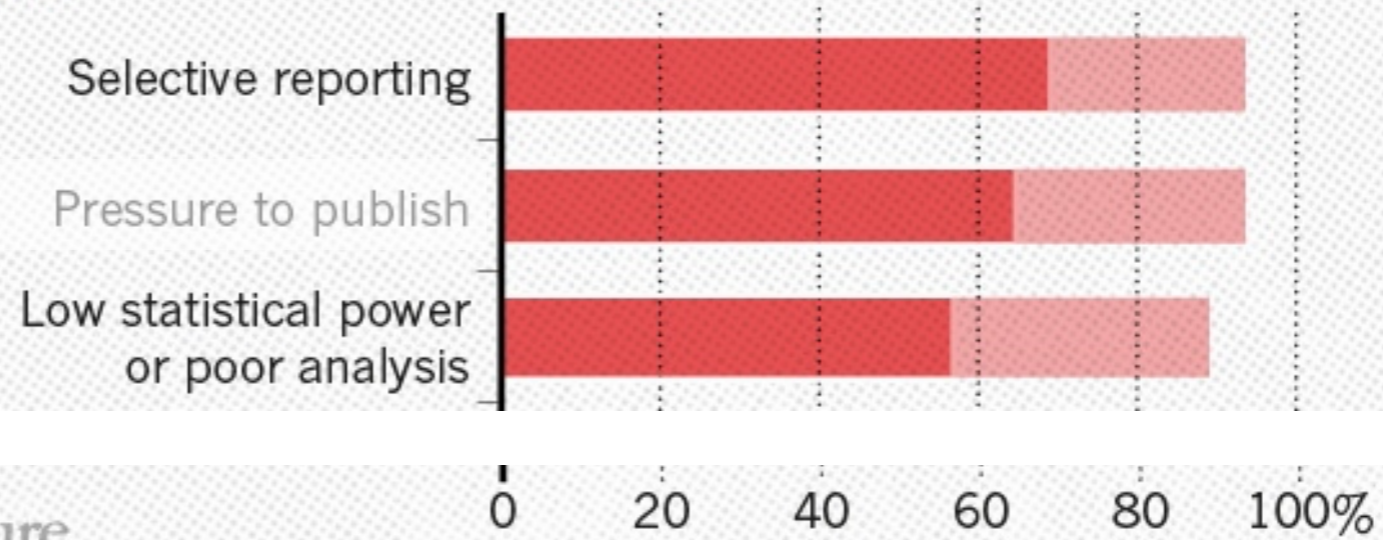
2016

©nature

# WHAT FACTORS CONTRIBUTE TO IRREPRODUCIBLE RESEARCH?

Many top-rated factors relate to intense competition and time pressure.

● Always/often contribute    ● Sometimes contribute

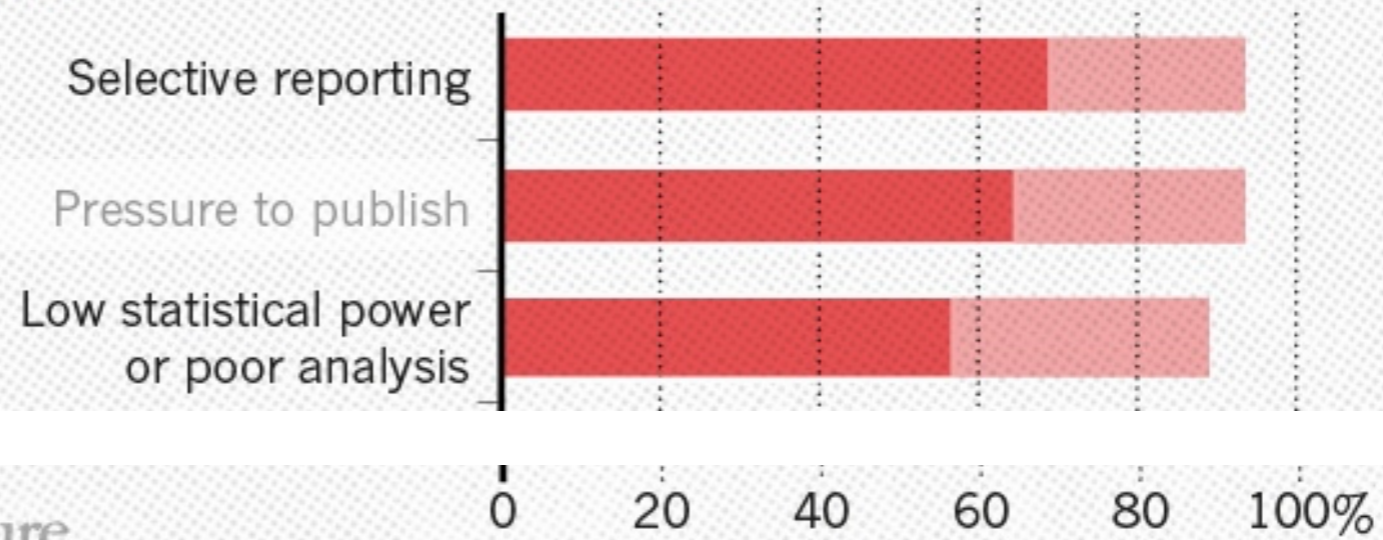




## WHAT FACTORS CONTRIBUTE TO IRREPRODUCIBLE RESEARCH?

Many top-rated factors relate to intense competition and time pressure.

● Always/often contribute    ● Sometimes contribute

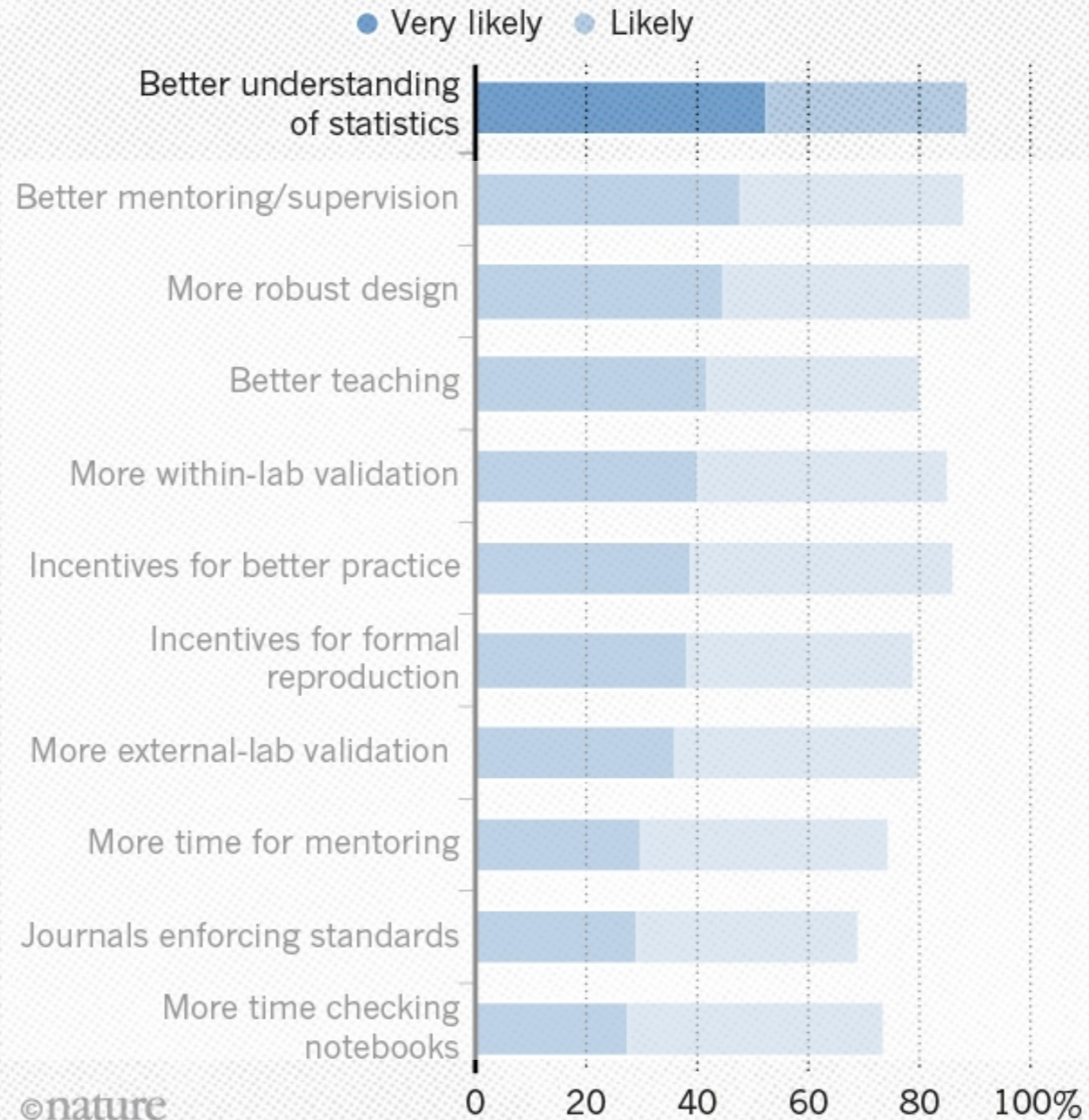


=

**typical student project**

# WHAT FACTORS COULD BOOST REPRODUCIBILITY?

Respondents were positive about most proposed improvements but emphasized training in particular.





**Education** is the central goal and focus of our statistics support and advisory service.

This is why our support is centred around **promoting best scientific practice** and emphasising methods that **increase the replicability and reproducibility** of statistical analysis.

We are committed to encourage a holistic approach to statistical analysis with **transparent and informational** data description, visualisation, analysis and inference.





# Have I sparked your interest for open science in statistics support?



**Theresa Elise Wege**

@TheresaWege

**Reach out to me**

[t.e.wege@lboro.ac.uk](mailto:t.e.wege@lboro.ac.uk) or @TheresaWege on twitter



**Find your UK Reproducibility Network - Local Lead**

<https://www.bristol.ac.uk/psychology/research/ukrn/networks/>